

GN 183 | C-shaped washers

Steel

METRIC



- 1
- 2
- 3
- 4
- 5
- 6
- 7
- 8
- 9
- 10
- 11
- 12
- 13
- 14
- 15
- 16
- 17
- 18

MATERIAL

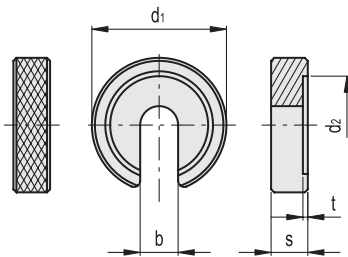
Case-hardened and black-oxide steel.

FEATURES AND APPLICATIONS

GN 183 C-shaped washers are suitable for assembly on parts to be machined without unscrewing the nut from the screw.



Conversion Table			
1 mm = 0.039 inch			
d1		b	
mm	inch	mm	inch
22	0.87	6.2	0.24
28	1.10	8.3	0.33
34	1.34	10.4	0.41
40	1.57	12.5	0.49
56	2.20	16.5	0.65



METRIC

Code	Description	d1	d2	b	s	t	For threadings	⚖
GN.31051	GN 183-22-6.2	22	16	6.2	6	0.8	M6	13
GN.31053	GN 183-28-8.3	28	21	8.3	7	1	M8	23
GN.31055	GN 183-34-10.4	34	25	10.4	8	1.2	M10	38
GN.31057	GN 183-40-12.5	40	30	12.5	9	1.8	M12	57
GN.31059	GN 183-56-16.5	56	37	16.5	12	1.8	M16	161

GN 185 | Washers for screws

Stainless steel

METRIC



MATERIAL

AISI 303 stainless steel, sand-blasted matte finish.

PLASTIC DISC

Polyamide based (PA) technopolymer, white colour.

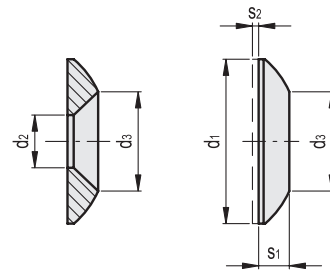
FEATURES AND APPLICATIONS

GN 185 washers are suitable for countersunk-head screws to enhance their aesthetical look when fitted on any surface.

A plastic disc is supplied for each washer in order to avoid any damage to the surfaces during the assembly.



Conversion Table	
1 mm = 0.039 inch	
d1	
mm	inch
18	0.71
20	0.79
22	0.87
26	1.02



INOX STAINLESS STEEL

METRIC

Code	Description	d1	d3	d2	s1	s2	Screws	⚖
GN.31251	GN 185-18-NI	18	8.5	4.3	3	0.8	M4	4
GN.31253	GN 185-20-NI	20	10.3	5.3	3.5	1	M5	5
GN.31255	GN 185-22-NI	22	12.3	6.4	4	1	M6	7
GN.31257	GN 185-26-NI	26	16.4	8.4	5	1	M8	12

Machine elements

1020



Models all rights reserved in accordance with the law. Always mention the source when reproducing our drawings and photos.

